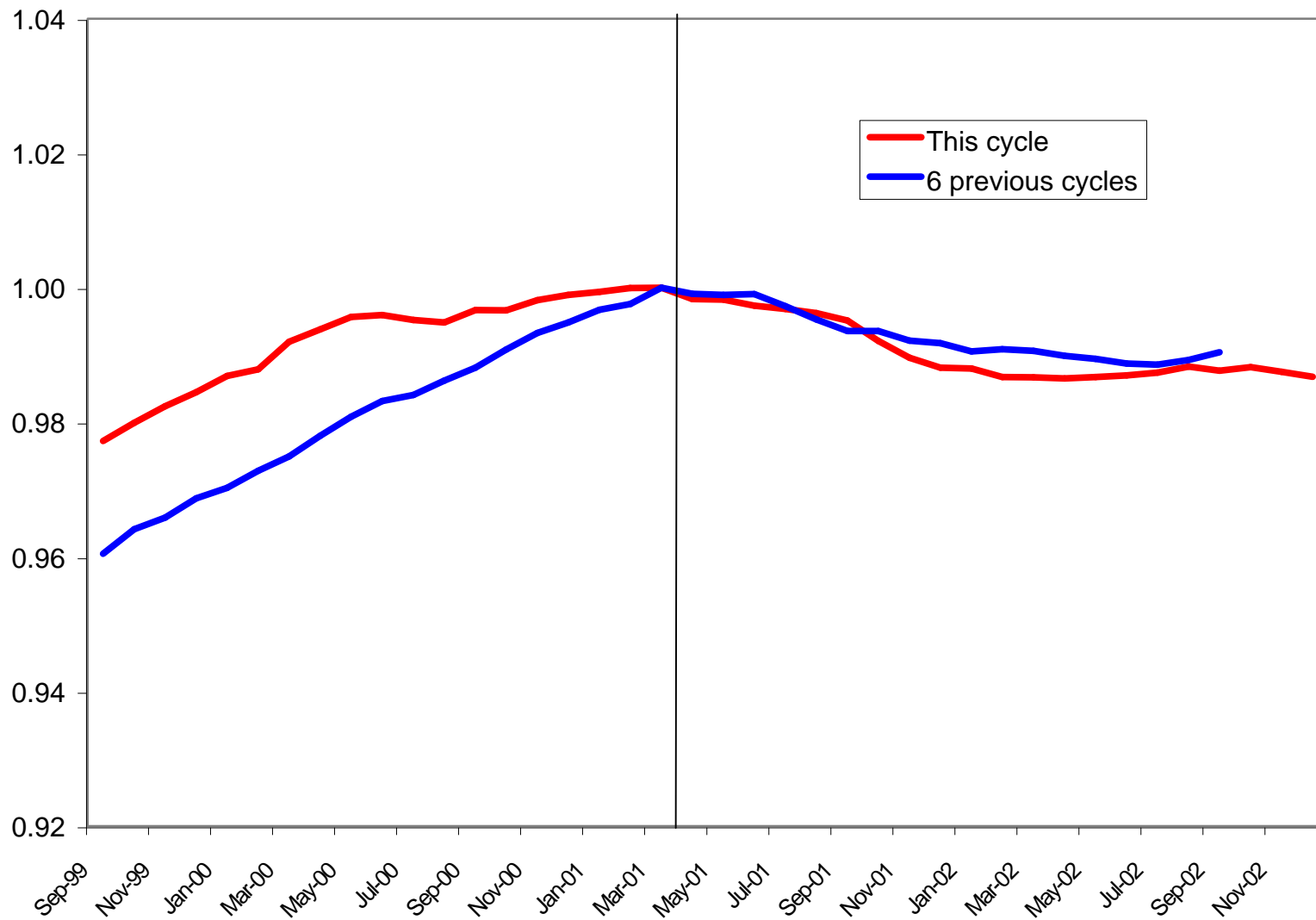
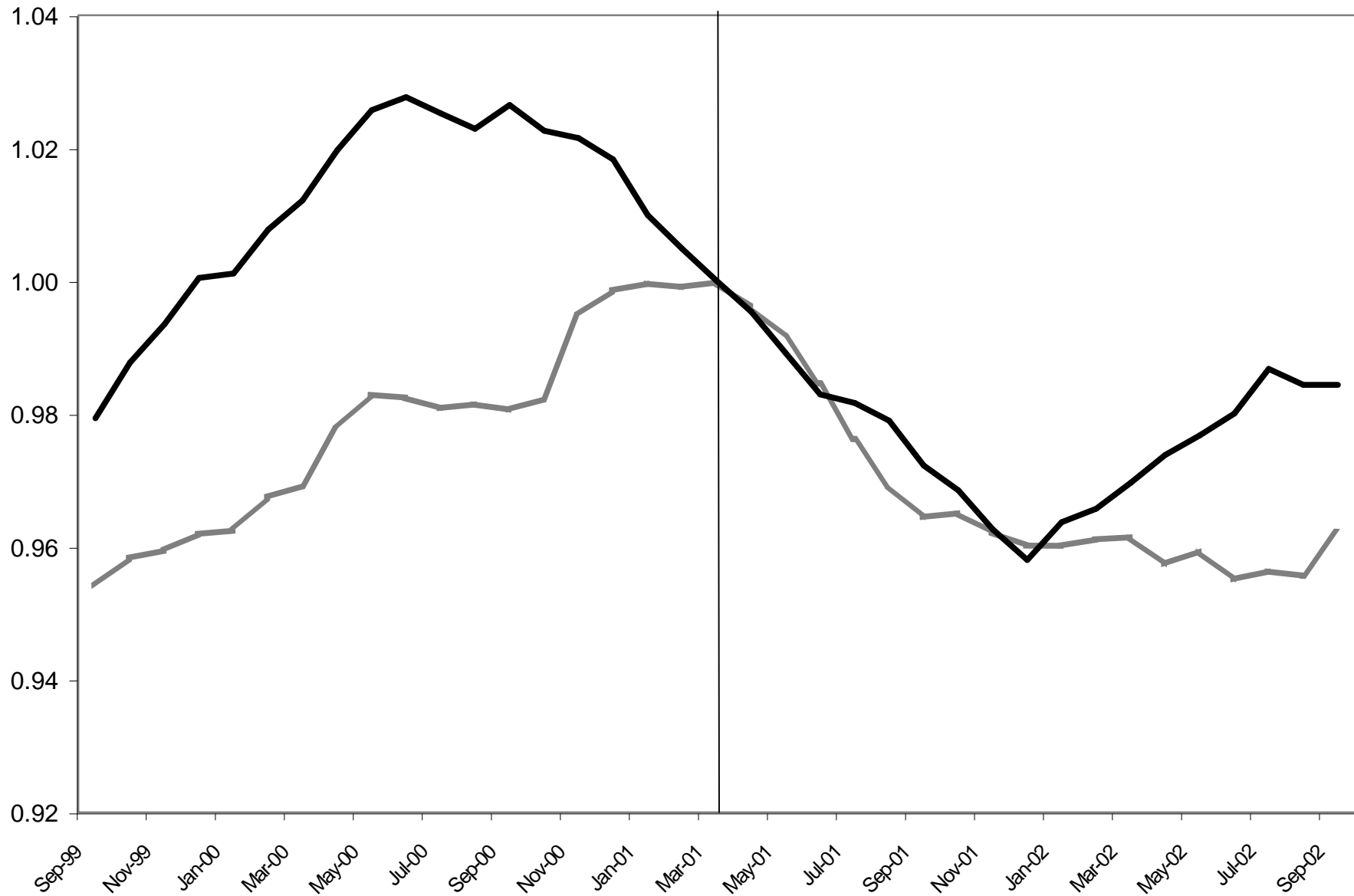
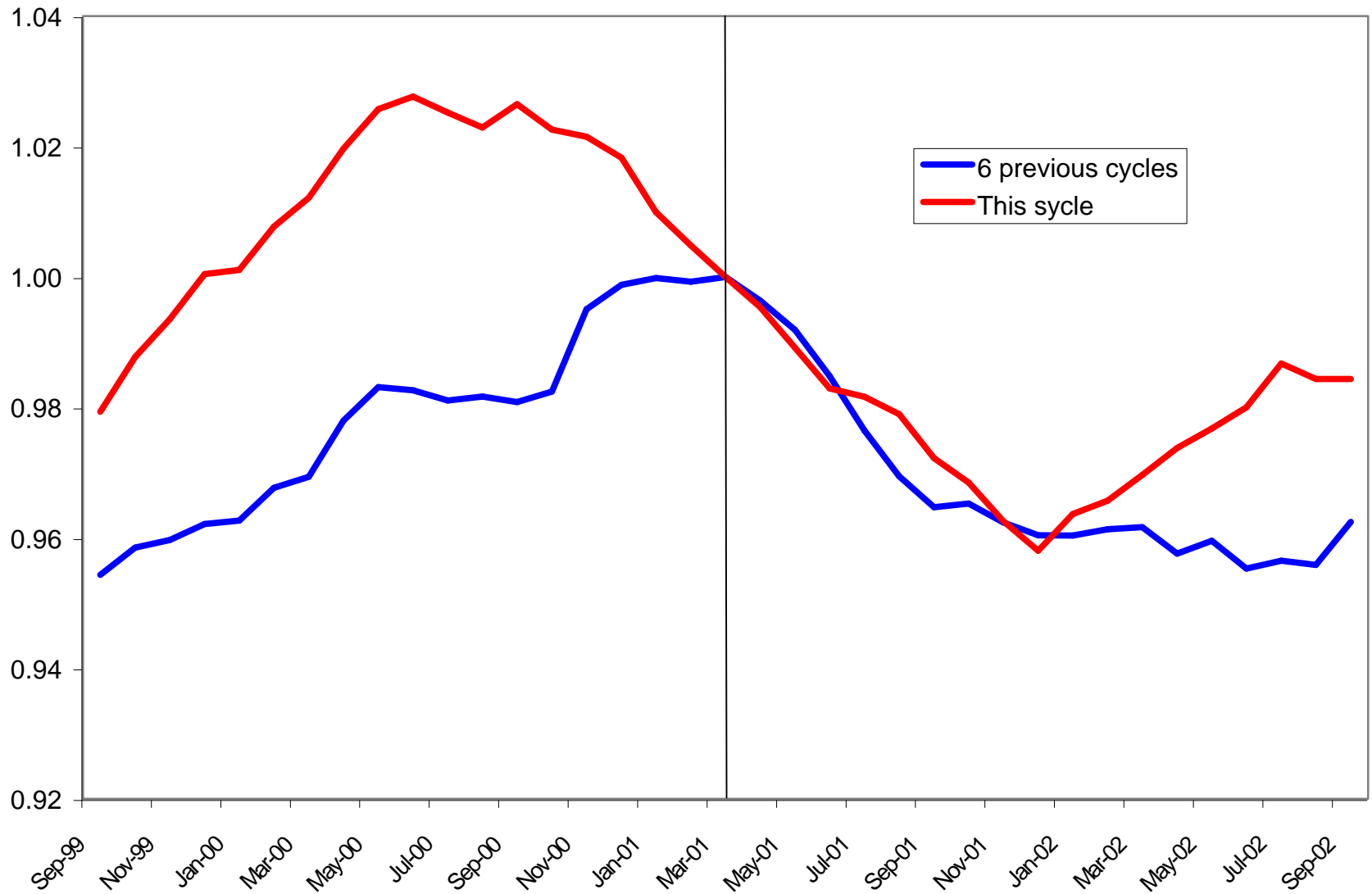


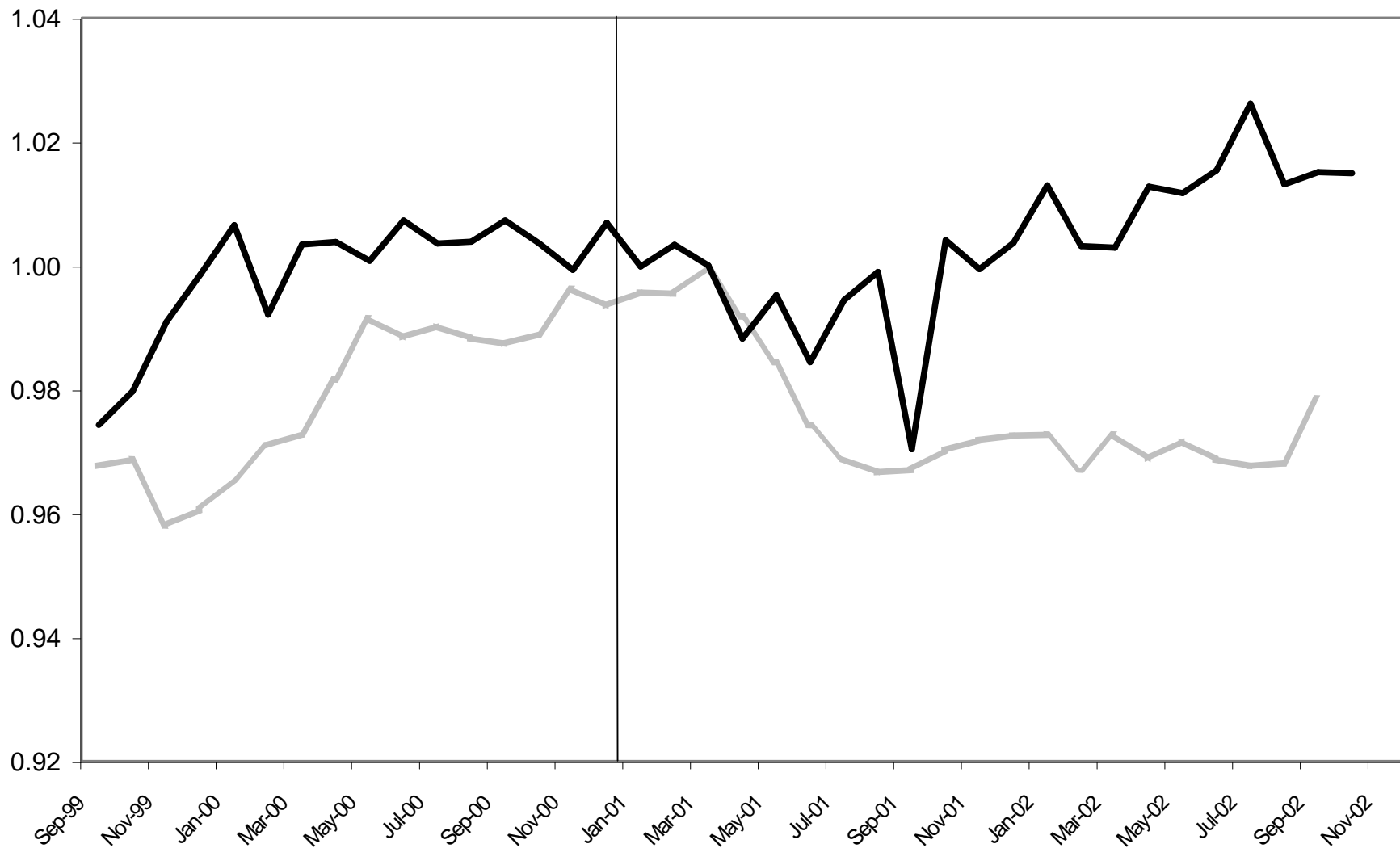
# Payroll Employment



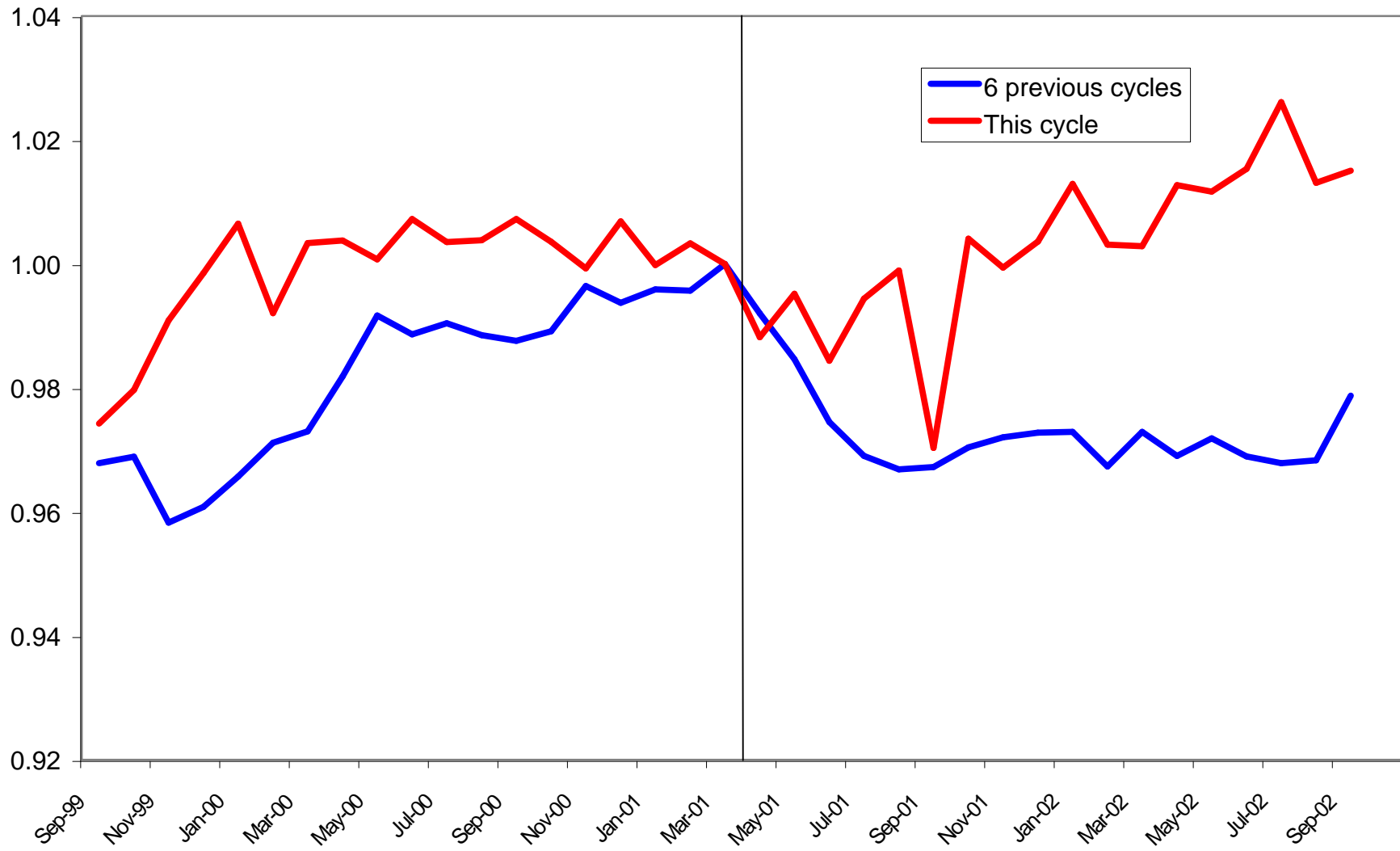


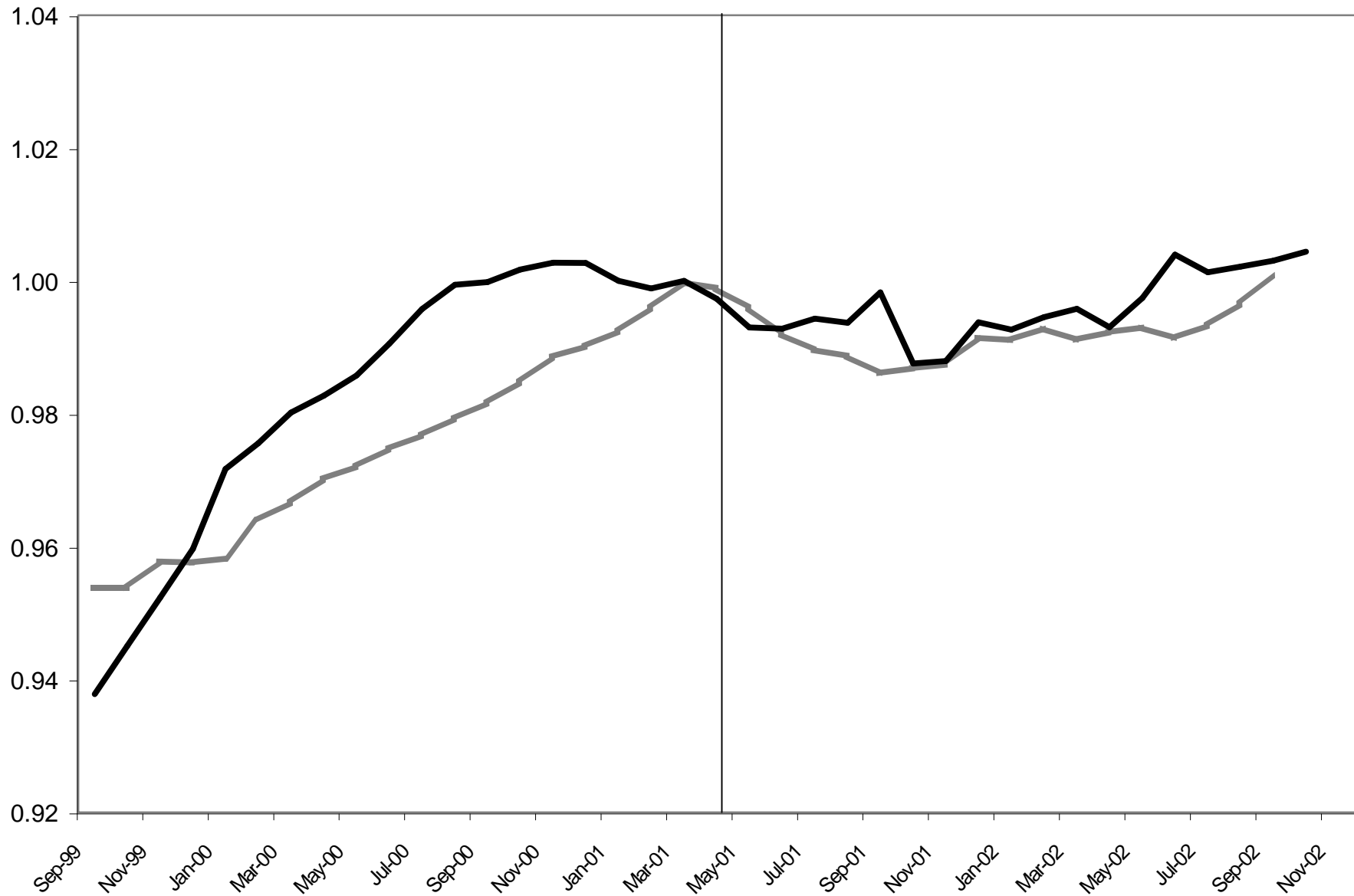
# Industrial Production



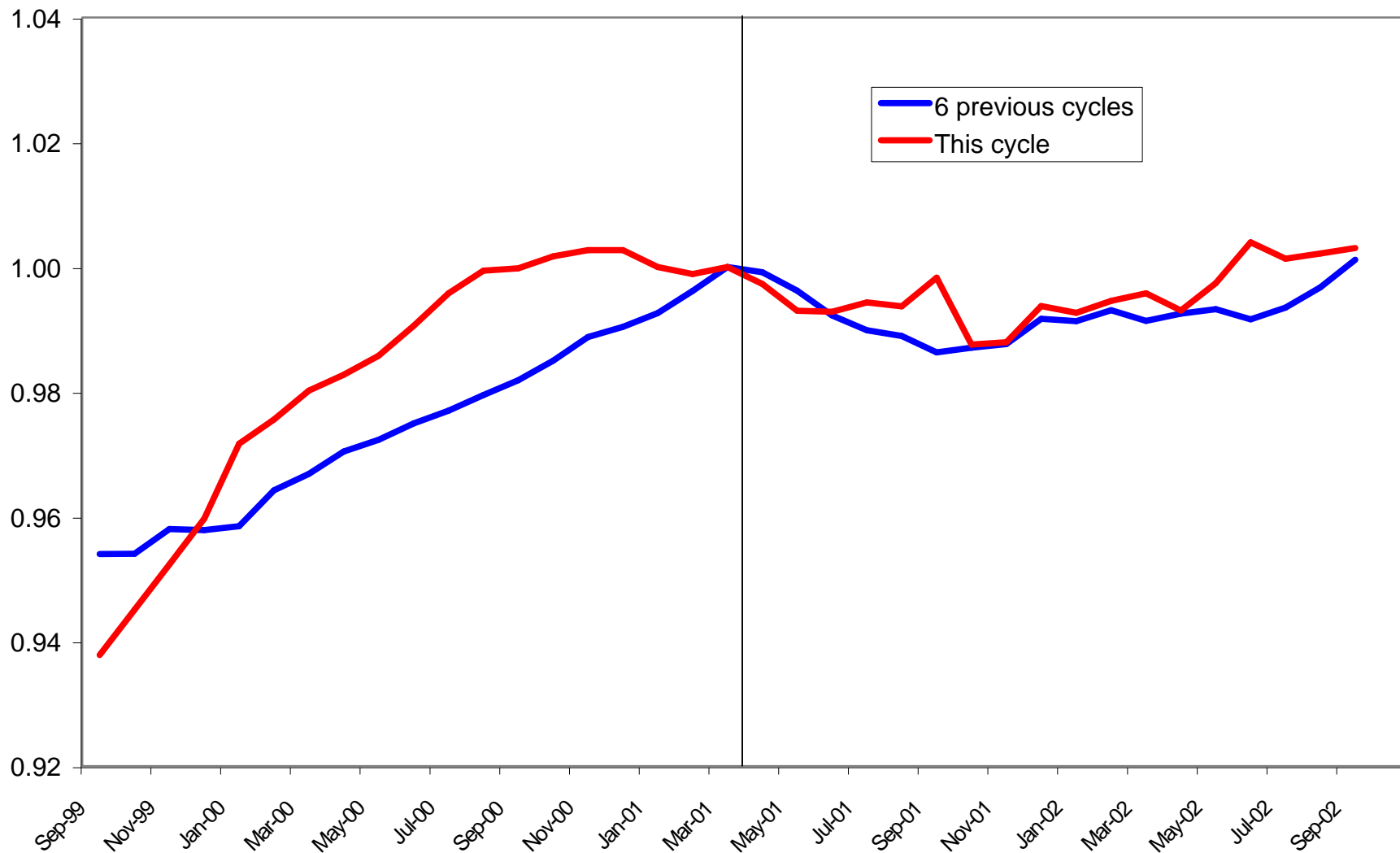


# Manufacturing and Trade Sales





# Real Personal Income less Transfers





Peak		Trough	
1960	4	1961	2
1969	12	1970	11
1973	11	1975	3
1980	1	1980	7
1981	7	1982	11
1990	7	1991	3
2001	3		

1960-61					1969		
	172				288		
	1	2	3	4	2	1	2
	IP	Emp	Trade	Income		IP	Emp
-18	26.819	51378				47.386	67783
-17	27.609	51814				47.313	68003
-16	27.643	51986				47.445	68219
-15	28.055	52408	208096	1669		47.625	68365
-14	28.605	52568	211037	1677.9		47.719	68603
-13	29.017	52883	213685	1692.5		48.336	68855
-12	29.635	53132	216266	1704.6		48.489	69161
-11	30.081	53422	219204	1718.1		48.782	69272
-10	30.116	53584	219908	1724		49.095	69542
-9	29.394	53663	218391	1720.8		49.48	69791
-8	28.399	53220	213742	1711.6		49.297	69948
-7	28.364	53257	213261	1711.4		49.111	70180
-6	28.158	53196	213431	1713.8		49.591	70498
-5	28.33	53509	213178	1725.7		49.853	70668
-4	30.081	54040	219879	1744.6		49.967	70799
-3	30.871	54185	222747	1753.6		49.956	70833
-2	30.596	54414	221322	1754.3		49.971	70993
-1	30.322	54287	219359	1755.3		49.5	70941
0	30.081	54634	220796	1761		49.367	71127
1	30.047	54362	216691	1765.1		48.453	71018
2	29.669	54276	217116	1763.6		48.421	71165
3	29.566	54214	215763	1764.5		48.358	71347
4	29.532	54198	215823	1761.8		48.234	71251
5	29.223	54063	217833	1762.7		48.177	70993
6	29.188	53982	216412	1768.6		48.022	70905
7	28.776	53845	215038	1757.7		48.139	70969
8	28.227	53577	214392	1745.7		48.054	70789
9	28.261	53534	208995	1760.4		47.722	70857
10	28.227	53380	210197	1760.3		46.768	70416
11	28.399	53510	213518	1768.3		46.484	70296

12	28.982	53462	213113	1774.2	47.552	70666
13	29.429	53677	215618	1783.9	47.918	70718
14	29.841	53916	219597	1799.6	47.826	70657
15	30.184	54027	217915	1804.1	47.775	70746
16	30.459	54222	222896	1812.1	48.043	70936
17	30.425	54285	224417	1816.6	48.287	71129
18	31.008	54376	226539	1836.4	48.489	71163
19						
20						
21						
22						
23						

	IP	Emp	Trade	Income		IP	Emp
-18	0.891559	0.940403				0.959872	0.952986
-17	0.917822	0.948384				0.958393	0.956079
-16	0.918952	0.951532				0.961067	0.959115
-15	0.932649	0.959256	0.942481	0.947757		0.964713	0.961168
-14	0.950932	0.962185	0.955801	0.952811		0.966617	0.964514
-13	0.964629	0.96795	0.967794	0.961102		0.979116	0.968057
-12	0.985173	0.972508	0.979483	0.967973		0.982215	0.972359
-11	1	0.977816	0.99279	0.975639		0.98815	0.97392
-10	1.001164	0.980781	0.995978	0.978989		0.99449	0.977716
-9	0.977162	0.982227	0.989108	0.977172		1.002289	0.981217
-8	0.944084	0.974119	0.968052	0.971948		0.998582	0.983424
-7	0.942921	0.974796	0.965873	0.971834		0.994814	0.986686
-6	0.936073	0.973679	0.966643	0.973197		1.004537	0.991157
-5	0.94179	0.979408	0.965498	0.979955		1.009845	0.993547
-4	1	0.989128	0.995847	0.990687		1.012154	0.995389
-3	1.026262	0.991782	1.008836	0.995798		1.011931	0.995867
-2	1.01712	0.995973	1.002382	0.996195		1.012235	0.998116
-1	1.008012	0.993649	0.993492	0.996763		1.002694	0.997385
0	1	1	1	1		1	1
1	0.99887	0.995021	0.981408	1.002328		0.981486	0.998468
2	0.986304	0.993447	0.983333	1.001476		0.980837	1.000534
3	0.98288	0.992312	0.977205	1.001988		0.979561	1.003093
4	0.981749	0.99202	0.977477	1.000454		0.977049	1.001743
5	0.971477	0.989549	0.98658	1.000965		0.975895	0.998116
6	0.970313	0.988066	0.980145	1.004316		0.972755	0.996879
7	0.956617	0.985558	0.973922	0.998126		0.975125	0.997779
8	0.938366	0.980653	0.970996	0.991312		0.973403	0.995248
9	0.939497	0.979866	0.946552	0.999659		0.966678	0.996204

10	0.938366	0.977047	0.951996	0.999602	0.947353	0.990004
11	0.944084	0.979427	0.967037	1.004145	0.941601	0.988317
12	0.963465	0.978548	0.965203	1.007496	0.963235	0.993519
13	0.978325	0.982483	0.976548	1.013004	0.970648	0.99425
14	0.992022	0.986858	0.99457	1.021919	0.968785	0.993392
15	1.003424	0.98889	0.986952	1.024475	0.967752	0.994643
16	1.012566	0.992459	1.009511	1.029018	0.97318	0.997315
17	1.011436	0.993612	1.0164	1.031573	0.978123	1.000028
18	1.030817	0.995278	1.02601	1.042817	0.982215	1.000506
19						
20						
21						

1.026262		1	1.008836		1	1.012235		1
0.938366	0.977047	0.946552	0.991312			0.941601	0.988317	
0.085647	0.022953	0.061738	0.008688			0.06978	0.011683	

9-70

1973-75

		335					
3	4	3	1	2	3	4	4
Trade	Income		IP	Emp	Trade	Income	
324435	2572		52.628	73341	370383	2936.4	
327531	2588.6		52.755	73643	371999	2910.4	
321947	2597.5		52.78	73636	369689	2957.5	
326453	2609.3		53.398	73929	378551	2988.4	
330874	2613.3		53.774	74115	385061	3001.9	
333727	2624.1		54.439	74527	390376	3044.5	
330632	2633.4		55.064	74881	397844	3068.5	
330640	2634.2		55.81	75235	403150	3088.9	
331155	2643.9		56.244	75474	408285	3083.2	
332373	2656.2		57.005	75908	408923	3100.6	
333810	2665.3		57.062	76137	407290	3103.1	
333580	2674.8		56.883	76312	405605	3106	
333389	2683.9		57.28	76516	404305	3127.3	
333483	2698		57.331	76738	403498	3139.2	
337101	2715.7		57.57	76758	408997	3153.2	
338728	2720.7		57.379	77018	400545	3142	
342646	2726.6		57.838	77164	403310	3163.8	
337902	2726.8		58.209	77502	413655	3194.2	
337279	2729.9		58.411	77833	420346	3204.9	
333028	2725.6		58.29	77992	414720	3198.2	
333324	2727.1		57.978	77953	415094	3164.7	
329429	2733.9		57.735	78177	413057	3143.3	
327764	2739.1		57.802	78177	414454	3120.9	
331324	2741		57.787	78261	411433	3102.4	
332651	2735.5		58.093	78407	413244	3110.8	
333006	2749.5		58.022	78434	411802	3114.7	
332852	2756.1		57.996	78517	410860	3125.5	
332274	2755.3		57.356	78478	406875	3109.8	
328817	2732.4		57.397	78498	403428	3103.6	
323298	2729		57.135	78569	396520	3108.1	

333558	2733.7	55.277	78238	392277	3080.1
336826	2762.4	53.293	77565	380778	3063.1
338707	2762.2	52.693	77145	379822	3045.8
340112	2771.8	51.528	76742	377367	3027.1
341962	2779.5	50.977	76419	366032	3024.9
343632	2789.8	50.924	76298	369699	3022.3
348351	2788.2	50.779	76459	369614	3038.4

Trade	Income	IP	Emp	Trade	Income
0.961919	0.942159	0.900995	0.942287	0.881138	0.916222
0.971098	0.94824	0.903169	0.946167	0.884983	0.908109
0.954542	0.9515	0.903597	0.946077	0.879487	0.922806
0.967902	0.955823	0.914177	0.949841	0.90057	0.932447
0.98101	0.957288	0.920614	0.952231	0.916057	0.936659
0.989469	0.961244	0.931999	0.957524	0.928702	0.949952
0.980292	0.964651	0.942699	0.962073	0.946468	0.95744
0.980316	0.964944	0.955471	0.966621	0.959091	0.963805
0.981843	0.968497	0.962901	0.969692	0.971307	0.962027
0.985454	0.973003	0.975929	0.975268	0.972825	0.967456
0.989715	0.976336	0.976905	0.97821	0.96894	0.968236
0.989033	0.979816	0.973841	0.980458	0.964931	0.969141
0.988467	0.98315	0.980637	0.983079	0.961839	0.975787
0.988745	0.988315	0.98151	0.985931	0.959919	0.9795
0.999472	0.994798	0.985602	0.986188	0.973001	0.983868
1.004296	0.99663	0.982332	0.989529	0.952894	0.980374
1.015913	0.998791	0.99019	0.991405	0.959471	0.987176
1.001847	0.998864	0.996542	0.995747	0.984082	0.996661
1	1	1	1	1	1
0.987396	0.998425	0.997928	1.002043	0.986616	0.997909
0.988274	0.998974	0.992587	1.001542	0.987506	0.987457
0.976726	1.001465	0.988427	1.00442	0.98266	0.980779
0.971789	1.00337	0.989574	1.00442	0.985983	0.97379
0.982344	1.004066	0.989317	1.005499	0.978796	0.968018
0.986278	1.002051	0.994556	1.007375	0.983104	0.970639
0.987331	1.00718	0.99334	1.007722	0.979674	0.971856
0.986874	1.009597	0.992895	1.008788	0.977433	0.975225
0.985161	1.009304	0.981938	1.008287	0.967953	0.970327

0.974911	1.000916	0.98264	1.008544	0.959752	0.968392
0.958548	0.99967	0.978155	1.009456	0.943318	0.969796
0.988968	1.001392	0.946346	1.005203	0.933224	0.96106
0.998657	1.011905	0.91238	0.996557	0.905868	0.955755
1.004234	1.011832	0.902107	0.991161	0.903594	0.950357
1.0084	1.015349	0.882163	0.985983	0.897753	0.944522
1.013885	1.018169	0.872729	0.981833	0.870787	0.943836
1.018836	1.021942	0.871822	0.980278	0.879511	0.943025
1.032827	1.021356	0.86934	0.982347	0.879309	0.948048

1.015913	1	1	1	1	1
0.958548	0.998425	0.86934	0.980278	0.870787	0.943025
0.056466	0.001575	0.13066	0.019722	0.129213	0.056975

1980				1981-82			
409					427		
1	2	3	4	5	1	2	3
IP	Emp	Trade	Income		IP	Emp	Trade
63.825	87037	458758	3588.7		65.631	90729	469898
64.033	87324	464741	3606.5		65.62	90876	465478
64.172	87434	463680	3621.6		65.416	90995	454879
64.642	87797	467817	3640.2		64.093	90780	445141
65.111	88249	469844	3652.5		62.526	90316	439442
65.501	88559	472359	3675.5		61.683	89974	438177
65.181	88728	467192	3680.1		61.075	89676	443706
65.475	88985	464984	3694.9		61.406	89964	446904
65.664	89426	478440	3711.6		62.43	90046	456317
65.082	89363	465532	3681.8		63.115	90334	465847
65.56	89681	475838	3686.3		64.251	90550	466157
65.512	89955	470980	3697		64.606	90774	467308
65.318	90019	470384	3699.2		64.226	91003	470153
64.831	90159	471201	3705.8		63.963	91095	468215
64.9	90149	468541	3703.9		64.292	91206	463378
65.213	90360	467141	3724		63.961	91219	463637
65.181	90466	467318	3739.1		64.437	91142	460358
65.231	90617	465953	3752.4		64.738	91285	459143
65.631	90729	469898	3751.6		65.217	91410	460199
65.62	90876	465478	3737.8		65.141	91320	458356
65.416	90995	454879	3719.6		64.711	91191	455203
64.093	90780	445141	3688.2		64.231	91216	449017
62.526	90316	439442	3664.5		63.505	91014	445546
61.683	89974	438177	3665.9		62.772	90831	439778
61.075	89676	443706	3648.8		61.695	90448	437464
61.406	89964	446904	3657.1		62.877	90474	444447
62.43	90046	456317	3668.1		62.409	90337	444802
63.115	90334	465847	3720.9		61.88	90031	445304
64.251	90550	466157	3749.3		61.405	89965	447596
64.606	90774	467308	3772.2		61.166	89703	441250

64.226	91003	470153	3774.3	60.995	89380	439549
63.963	91095	468215	3761	60.477	89177	435519
64.292	91206	463378	3766.4	60.248	88995	436360
63.961	91219	463637	3751.1	59.645	88787	431869
64.437	91142	460358	3759.2	59.453	88649	433045
64.738	91285	459143	3781.5	58.931	88675	431855
65.217	91410	460199	3825	60.053	88826	440096

IP	Emp	Trade	Income	IP	Emp	Trade
0.972483	0.959307	0.976293	0.956579	1.006348	0.99255	1.021076
0.975652	0.962471	0.989025	0.961323	1.006179	0.994158	1.011471
0.97777	0.963683	0.986767	0.965348	1.003051	0.99546	0.98844
0.984931	0.967684	0.995571	0.970306	0.982765	0.993108	0.967279
0.992077	0.972666	0.999885	0.973585	0.958738	0.988032	0.954896
0.998019	0.976083	1.005237	0.979715	0.945812	0.984291	0.952147
0.993143	0.977945	0.994241	0.980941	0.936489	0.981031	0.964161
0.997623	0.980778	0.989542	0.984886	0.941564	0.984181	0.97111
1.000503	0.985639	1.018178	0.989338	0.957266	0.985078	0.991565
0.991635	0.984944	0.990709	0.981395	0.967769	0.988229	1.012273
0.998918	0.988449	1.012641	0.982594	0.985188	0.990592	1.012947
0.998187	0.991469	1.002303	0.985446	0.990631	0.993042	1.015448
0.995231	0.992174	1.001034	0.986033	0.984805	0.995548	1.02163
0.987811	0.993718	1.002773	0.987792	0.980772	0.996554	1.017419
0.988862	0.993607	0.997112	0.987285	0.985817	0.997768	1.006908
0.993631	0.995933	0.994133	0.992643	0.980741	0.997911	1.007471
0.993143	0.997101	0.994509	0.996668	0.98804	0.997068	1.000346
0.993905	0.998766	0.991605	1.000213	0.992655	0.998633	0.997705
1	1	1	1	1	1	1
0.999832	1.00162	0.990594	0.996322	0.998835	0.999015	0.995995
0.996724	1.002932	0.968038	0.99147	0.992241	0.997604	0.989144
0.976566	1.000562	0.947314	0.983101	0.984881	0.997878	0.975702
0.95269	0.995448	0.935186	0.976783	0.973749	0.995668	0.968159
0.939845	0.991679	0.932494	0.977156	0.96251	0.993666	0.955626
0.930582	0.988394	0.94426	0.972598	0.945996	0.989476	0.950597
0.935625	0.991568	0.951066	0.974811	0.96412	0.98976	0.965771
0.951227	0.992472	0.971098	0.977743	0.956944	0.988262	0.966543
0.961664	0.995646	0.991379	0.991817	0.948832	0.984914	0.967634



0.978973	0.998027	0.992039	0.999387
0.984382	1.000496	0.994488	1.005491
0.978592	1.00302	1.000543	1.006051
0.974585	1.004034	0.996418	1.002506
0.979598	1.005257	0.986125	1.003945
0.974555	1.005401	0.986676	0.999867
0.981807	1.004552	0.979698	1.002026
0.986394	1.006128	0.977112	1.00797
0.993692	1.007506	0.979359	1.019565

0.941549	0.984192	0.972614
0.937884	0.981326	0.958824
0.935262	0.977792	0.955128
0.92732	0.975572	0.946371
0.923808	0.973581	0.948198
0.914562	0.971305	0.93844
0.911618	0.969795	0.940995
0.903614	0.97008	0.938409
0.920818	0.971732	0.956317

1.000503	1	1.018178	1.000213
0.930582	0.988394	0.932494	0.972598
0.069886	0.011606	0.084155	0.027609

1.006348	1	1.02163
0.903614	0.969795	0.938409
0.102086	0.030205	0.081459

1990-91							
		535					663
4		1	2	3	4		1
Income	6	IP	Emp	Trade	Income	7	IP
3751.6		77.578	106993	596857	4944.6		110.737
3737.8		77.201	107244	590334	4949.4		111.688
3719.6		77.484	107438	586820	4963.1		112.343
3688.2		77.474	107637	592172	4955.6		113.125
3664.5		76.965	107738	589532	4934.4		113.2
3665.9		76.925	107838	587714	4947.6		113.947
3648.8		76.154	107933	581686	4954.1		114.446
3657.1		76.822	108048	596452	4959.1		115.299
3668.1		76.612	108178	592273	4952.8		115.982
3720.9		76.509	108290	586555	4962.2		116.202
3749.3		76.646	108571	591801	4986.8		115.926
3772.2		77.172	108692	593757	4995.9		115.667
3774.3		76.72	108946	589119	5004.8		116.071
3761		77.435	109263	597872	5029.6		115.631
3766.4		77.827	109461	601356	5031.3		115.506
3751.1		77.815	109499	594426	5055.9		115.144
3759.2		77.849	109790	599256	5045.7		114.196
3781.5		78.138	109869	600805	5054.1		113.622
3825		77.985	109707	597586	5075.2		113.075
3844.2		78.084	109543	603597	5050		112.55
3840		78.19	109457	592499	5044.6		111.847
3830.3		77.709	109274	589958	4997.6		111.145
3826.9		76.722	109074	582984	4995.3		110.996
3817.3		76.235	108965	576916	5001.2		110.696
3801.4		75.953	108759	573114	4946.3		109.933
3810.3		75.387	108500	576506	4945.2		109.512
3811.9		74.977	108330	573173	4950.4		108.845
3830.9		75.156	108145	584467	4960.8		108.327
3835.5		75.907	108107	589261	4958.2		108.967
3812.8		76.57	108200	586622	4986.7		109.197

3797	76.652	108131	594279	4971.1	109.641
3795.8	76.6	108215	591775	4971.5	110.113
3786.1	77.28	108223	594306	4981.3	110.447
3781	77.15	108209	594906	4958.9	110.818
3781.9	76.985	108115	592980	4969.6	111.577
3794.6	76.723	108121	585431	4993.9	111.305
3792.9	76.247	108084	596771	4991.6	111.305
					110.655
					110.796
					0

						1.027654
Income	IP	Emp	Trade	Income		IP
0.98081	0.994781	0.975261	0.99878	0.974267	Sep-99	0.979323
0.977203	0.989947	0.977549	0.987865	0.975213	Oct-99	0.987734
0.972444	0.993576	0.979318	0.981984	0.977912	Nov-99	0.993526
0.964235	0.993447	0.981132	0.99094	0.976434	Dec-99	1.000442
0.958039	0.986921	0.982052	0.986522	0.972257	Jan-00	1.001105
0.958405	0.986408	0.982964	0.98348	0.974858	Feb-00	1.007712
0.953935	0.976521	0.98383	0.973393	0.976139	Mar-00	1.012125
0.956105	0.985087	0.984878	0.998102	0.977124	Apr-00	1.019668
0.95898	0.982394	0.986063	0.991109	0.975883	May-00	1.025709
0.972784	0.981073	0.987084	0.981541	0.977735	Jun-00	1.027654
0.980209	0.98283	0.989645	0.990319	0.982582	Jul-00	1.025213
0.986196	0.989575	0.990748	0.993593	0.984375	Aug-00	1.022923
0.986745	0.983779	0.993063	0.985831	0.986129	Sep-00	1.026496
0.983268	0.992947	0.995953	1.000479	0.991015	Oct-00	1.022604
0.98468	0.997974	0.997758	1.006309	0.99135	Nov-00	1.021499
0.98068	0.99782	0.998104	0.994712	0.996197	Dec-00	1.018298
0.982797	0.998256	1.000757	1.002795	0.994187	Jan-01	1.009914
0.988627	1.001962	1.001477	1.005387	0.995843	Feb-01	1.004837
1	1	1	1	1	Mar-01	1
1.00502	1.001269	0.998505	1.010059	0.995035	Apr-01	0.995357
1.003922	1.002629	0.997721	0.991487	0.993971	May-01	0.98914
1.001386	0.996461	0.996053	0.987235	0.98471	Jun-01	0.982932
1.000497	0.983805	0.99423	0.975565	0.984257	Jul-01	0.981614
0.997987	0.97756	0.993237	0.965411	0.985419	Aug-01	0.978961
0.99383	0.973944	0.991359	0.959049	0.974602	Sep-01	0.972213
0.996157	0.966686	0.988998	0.964725	0.974385	Oct-01	0.96849
0.996575	0.961428	0.987448	0.959147	0.97541	Nov-01	0.962591
1.001542	0.963724	0.985762	0.978047	0.977459	Dec-01	0.95801

1.002745	0.973354	0.985416	0.986069	0.976947	Jan-02	0.96367
0.99681	0.981855	0.986263	0.981653	0.982562	Feb-02	0.965704
0.99268	0.982907	0.985634	0.994466	0.979488	Mar-02	0.969631
0.992366	0.98224	0.9864	0.990276	0.979567	Apr-02	0.973805
0.98983	0.99096	0.986473	0.994511	0.981498	May-02	0.976759
0.988497	0.989293	0.986345	0.995515	0.977085	Jun-02	0.98004
0.988732	0.987177	0.985489	0.992292	0.979193	Jul-02	0.986752
0.992052	0.983817	0.985543	0.97966	0.983981	Aug-02	0.984347
0.991608	0.977714	0.985206	0.998636	0.983528	Sep-02	0.984347
					Oct-02	0.978598
					Nov-02	
					Dec-02	

1	1.001962	1.001477	1.006309	1	1.027654
0.988497	0.961428	0.985206	0.959049	0.974385	0.95801
0.011503	0.040454	0.016247	0.046964	0.025615	0.06777
					0.083086

Emp Sales Income

2001-

2	3	4
Emp	Trade	Income
129448	824485	6466.2
129801	829081	6516.3
130130	838575	6566.4
130406	845064	6616.8
130728	851782	6699.7
130859	839581	6726.6
131397	849163	6758.4
131645	849492	6775.9
131887	846917	6796.8
131925	852440	6830
131827	849290	6865.9
131777	849532	6891
132023	852418	6893.7
132018	849329	6906.9
132217	845684	6913.8
132319	852111	6913.7
132382	846154	6895.1
132457	849124	6887.3
132461	846301	6895
132243	836301	6876.4
132229	842232	6846.6
132108	833085	6845.4
132045	841549	6855.8
131966	845389	6851.5
131819	821184	6883.1
131414	849751	6809.4
131087	845791	6811.8
130890	849366	6852
130871	857225	6844.3
130706	848938	6857.5

130701	848731	6866
130680	857047	6846.9
130702	856165	6877.2
130736	859290	6922.4
130790	868400	6904.1
130913	857375	6909.9
130829	859025	6916
130898	858881	6925.5
130810	0	0
130709	0	0

			Average			
1	1.026112	1.003974				
Emp	Trade	Income	IP	Emp	Trade	Income
0.977254	0.974222	0.93781	0.95434	0.960466	0.967841	0.954007
0.979919	0.979653	0.945076	0.958527	0.964135	0.968888	0.954018
0.982402	0.990871	0.952342	0.959669	0.965864	0.958244	0.958002
0.984486	0.998538	0.959652	0.962114	0.968698	0.960791	0.957834
0.986917	1.006476	0.971675	0.96265	0.97028	0.965695	0.95844
0.987906	0.99206	0.975577	0.967664	0.972811	0.971138	0.964213
0.991967	1.003382	0.980189	0.969373	0.974958	0.973006	0.966846
0.99384	1.003771	0.982727	0.977982	0.978032	0.981825	0.970417
0.995667	1.000728	0.985758	0.98312	0.980828	0.991663	0.972286
0.995954	1.007254	0.990573	0.982643	0.983161	0.988651	0.974924
0.995214	1.003532	0.99578	0.981085	0.984073	0.990436	0.976984
0.994836	1.003818	0.99942	0.981661	0.9862	0.98853	0.979468
0.996693	1.007228	0.999811	0.980844	0.988117	0.987574	0.98184
0.996656	1.003578	1.001726	0.982446	0.990852	0.989139	0.984974
0.998158	0.999271	1.002727	0.995068	0.993306	0.996441	0.988778
0.998928	1.006865	1.002712	0.998786	0.994854	0.993724	0.990387
0.999404	0.999826	1.000015	0.999831	0.996737	0.995903	0.992636
0.99997	1.003336	0.998883	0.999295	0.997609	0.995686	0.996162
1	1	1	1	1	1	1
0.998354	0.988184	0.997302	0.99637	0.999112	0.992011	0.999173
0.998249	0.995192	0.99298	0.991887	0.998963	0.98463	0.996212
0.997335	0.984384	0.992806	0.984796	0.999053	0.974474	0.992238
0.996859	0.994385	0.994315	0.976436	0.997255	0.969027	0.989859
0.996263	0.998922	0.993691	0.969434	0.995291	0.966875	0.988935
0.995153	0.970321	0.998274	0.964691	0.993591	0.967239	0.986339
0.992096	1.004077	0.987585	0.965252	0.993564	0.970415	0.987086
0.989627	0.999397	0.987933	0.962377	0.992145	0.972015	0.987644
0.98814	1.003622	0.993764	0.960389	0.99178	0.972787	0.991685

0.987996	1.012908	0.992647	0.960373	0.990538	0.972897	0.991332
0.986751	1.003116	0.994561	0.961327	0.990881	0.967311	0.993079
0.986713	1.002871	0.995794	0.961635	0.99062	0.972922	0.991361
0.986555	1.012698	0.993024	0.957583	0.989883	0.969023	0.992517
0.986721	1.011655	0.997418	0.959547	0.989454	0.971872	0.99323
0.986977	1.015348	1.003974	0.955291	0.988761	0.968956	0.991632
0.987385	1.026112	1.00132	0.956513	0.988574	0.967861	0.993496
0.988314	1.013085	1.002161	0.955868	0.989278	0.968321	0.996757
0.987679	1.015035	1.003046	0.962433	0.990429	0.978743	1.001154
0.988200	1.014865	1.004423				
0.987536						
0.986773						

	1	1.007254	1.002727
0.986555	0.970321	0.987585	
0.013445	0.036667	0.0151	
0.018736	0.076666	0.021994	

Sources:

Employment: <http://stats.bls.gov/ces/home.htm> series EES00000001, Total Nonfarm  
 Industrial production: <http://www.federalreserve.gov/releases/G17/table2a.htm> or <http://www.federalreserve.gov/releases/G17/table2a.htm>  
 Manufacturing and trade sales: Table A0M057 (Manufacturing and trade sales - real) <http://www.federalreserve.gov/releases/G17/table2a.htm>  
 Income: Personal income less transfer payments, billions of 1996 dollars, <http://www.bls.gov>

Year	Month	Obs	IP	Emp	Sales	Income
1946	1	1	14.525	39721		
1946	2	2	13.804	39193		
1946	3	3	15.247	40183		
1946	4	4	14.972	40858		
1946	5	5	14.422	41248		
1946	6	6	15.315	41551		
1946	7	7	15.83	41955		
1946	8	8	16.414	42466		
1946	9	9	16.723	42749		
1946	10	10	17.032	42959		
1946	11	11	17.135	43229		
1946	12	12	17.238	43314		
1947	1	13	17.444	43497		
1947	2	14	17.547	43578		
1947	3	15	17.65	43621		
1947	4	16	17.513	43501		
1947	5	17	17.582	43544		
1947	6	18	17.582	43685		
1947	7	19	17.479	43682		
1947	8	20	17.582	43784		
1947	9	21	17.719	44001		
1947	10	22	17.891	44176		
1947	11	23	18.131	44313		
1947	12	24	18.2	44519		
1948	1	25	18.303	44667		
1948	2	26	18.337	44501		
1948	3	27	18.131	44624		
1948	4	28	18.165	44293		
1948	5	29	18.474	44647		
1948	6	30	18.715	44879		
1948	7	31	18.715	45062		
1948	8	32	18.646	45039		



1948	9	33	18.509	45162
1948	10	34	18.646	45065
1948	11	35	18.406	45069
1948	12	36	18.234	45022
1949	1	37	18.062	44624
1949	2	38	17.891	44417
1949	3	39	17.547	44136
1949	4	40	17.444	44112
1949	5	41	17.204	43814
1949	6	42	17.17	43592
1949	7	43	17.135	43418
1949	8	44	17.307	43479
1949	9	45	17.479	43699
1949	10	46	16.826	42805
1949	11	47	17.273	43142
1949	12	48	17.582	43491
1950	1	49	17.891	43469
1950	2	50	17.959	43192
1950	3	51	18.543	43824
1950	4	52	19.161	44260
1950	5	53	19.608	44574
1950	6	54	20.191	44952
1950	7	55	20.844	45360
1950	8	56	21.496	46024
1950	9	57	21.359	46301
1950	10	58	21.496	46528
1950	11	59	21.462	46653
1950	12	60	21.84	46752
1951	1	61	21.908	47230
1951	2	62	22.046	47531
1951	3	63	22.149	47794
1951	4	64	22.183	47760
1951	5	65	22.114	47805
1951	6	66	22.011	47913
1951	7	67	21.668	47925
1951	8	68	21.462	47794
1951	9	69	21.599	47748
1951	10	70	21.565	47825
1951	11	71	21.737	48027
1951	12	72	21.874	48122
1952	1	73	22.114	48227
1952	2	74	22.252	48493
1952	3	75	22.32	48416

1952	4	76	22.114	48509
1952	5	77	21.908	48474
1952	6	78	21.702	48125
1952	7	79	21.359	47999
1952	8	80	22.733	48686
1952	9	81	23.557	49085
1952	10	82	23.797	49434
1952	11	83	24.278	49719
1952	12	84	24.415	49937
1953	1	85	24.484	50045
1953	2	86	24.621	50273
1953	3	87	24.827	50382
1953	4	88	24.93	50314
1953	5	89	25.068	50358
1953	6	90	24.965	50389
1953	7	91	25.274	50382
1953	8	92	25.136	50271
1953	9	93	24.621	50226
1953	10	94	24.415	50108
1953	11	95	23.831	49825
1953	12	96	23.248	49625
1954	1	97	23.076	49341
1954	2	98	23.145	49276
1954	3	99	23.007	49046
1954	4	100	22.87	49039
1954	5	101	23.007	48852
1954	6	102	23.076	48791
1954	7	103	23.11	48689
1954	8	104	23.076	48643
1954	9	105	23.11	48765
1954	10	106	23.385	48828
1954	11	107	23.763	49103
1954	12	108	24.072	49234
1955	1	109	24.621	49354
1955	2	110	24.93	49523
1955	3	111	25.514	49851
1955	4	112	25.823	50104
1955	5	113	26.235	50404
1955	6	114	26.27	50693
1955	7	115	26.476	50811
1955	8	116	26.441	50929
1955	9	117	26.613	51103
1955	10	118	27.059	51323

1955	11	119	27.128	51507		
1955	12	120	27.231	51714		
1956	1	121	27.403	51863		
1956	2	122	27.162	52093		
1956	3	123	27.162	52228		
1956	4	124	27.368	52232		
1956	5	125	27.128	52365		
1956	6	126	26.888	52433		
1956	7	127	26.063	51746		
1956	8	128	27.128	52382		
1956	9	129	27.746	52439		
1956	10	130	27.986	52674		
1956	11	131	27.746	52752		
1956	12	132	28.158	52908		
1957	1	133	28.055	52808		
1957	2	134	28.33	53003		
1957	3	135	28.296	53062		
1957	4	136	27.918	53053		
1957	5	137	27.815	52996		
1957	6	138	27.883	52941		
1957	7	139	28.055	52972		
1957	8	140	28.055	52913		
1957	9	141	27.815	52816		
1957	10	142	27.403	52663		
1957	11	143	26.75	52482		
1957	12	144	26.235	52307		
1958	1	145	25.754	52003		
1958	2	146	25.205	51441		
1958	3	147	24.896	51142		
1958	4	148	24.484	50807		
1958	5	149	24.724	50770		
1958	6	150	25.377	50801		
1958	7	151	25.754	50911		
1958	8	152	26.269	51113		
1958	9	153	26.51	51355		
1958	10	154	26.819	51378		
1958	11	155	27.609	51814		
1958	12	156	27.643	51986		
1959	1	157	28.055	52408	208096	1669
1959	2	158	28.605	52568	211037	1677.9
1959	3	159	29.017	52883	213685	1692.5
1959	4	160	29.635	53132	216266	1704.6
1959	5	161	30.081	53422	219204	1718.1

1959	6	162	30.116	53584	219908	1724
1959	7	163	29.394	53663	218391	1720.8
1959	8	164	28.399	53220	213742	1711.6
1959	9	165	28.364	53257	213261	1711.4
1959	10	166	28.158	53196	213431	1713.8
1959	11	167	28.33	53509	213178	1725.7
1959	12	168	30.081	54040	219879	1744.6
1960	1	169	30.871	54185	222747	1753.6
1960	2	170	30.596	54414	221322	1754.3
1960	3	171	30.322	54287	219359	1755.3
1960	4	172	30.081	54634	220796	1761
1960	5	173	30.047	54362	216691	1765.1
1960	6	174	29.669	54276	217116	1763.6
1960	7	175	29.566	54214	215763	1764.5
1960	8	176	29.532	54198	215823	1761.8
1960	9	177	29.223	54063	217833	1762.7
1960	10	178	29.188	53982	216412	1768.6
1960	11	179	28.776	53845	215038	1757.7
1960	12	180	28.227	53577	214392	1745.7
1961	1	181	28.261	53534	208995	1760.4
1961	2	182	28.227	53380	210197	1760.3
1961	3	183	28.399	53510	213518	1768.3
1961	4	184	28.982	53462	213113	1774.2
1961	5	185	29.429	53677	215618	1783.9
1961	6	186	29.841	53916	219597	1799.6
1961	7	187	30.184	54027	217915	1804.1
1961	8	188	30.459	54222	222896	1812.1
1961	9	189	30.425	54285	224417	1816.6
1961	10	190	31.008	54376	226539	1836.4
1961	11	191	31.489	54622	229691	1854.3
1961	12	192	31.764	54744	230859	1863.2
1962	1	193	31.489	54709	230804	1857
1962	2	194	32.004	55018	230443	1866.7
1962	3	195	32.176	55107	233980	1879.4
1962	4	196	32.245	55459	234209	1891.5
1962	5	197	32.21	55514	234597	1894.9
1962	6	198	32.142	55561	234181	1900.8
1962	7	199	32.451	55643	234435	1909.9
1962	8	200	32.485	55778	235555	1911.8
1962	9	201	32.691	55849	236167	1914.2
1962	10	202	32.725	55912	237736	1917.9
1962	11	203	32.863	55936	241304	1928.8
1962	12	204	32.863	55918	237272	1937.9

1963	1	205	33.103	55935	238737	1931.2
1963	2	206	33.481	56055	243203	1935.8
1963	3	207	33.687	56153	244085	1944.5
1963	4	208	33.996	56454	246581	1951.2
1963	5	209	34.408	56513	244740	1959.4
1963	6	210	34.511	56563	247666	1971.7
1963	7	211	34.374	56688	250509	1972.6
1963	8	212	34.442	56823	247739	1980.8
1963	9	213	34.786	56962	248722	1994.2
1963	10	214	35.026	57152	251942	2006.5
1963	11	215	35.198	57126	250112	2010
1963	12	216	35.129	57252	254128	2025
1964	1	217	35.438	57269	256664	2025.6
1964	2	218	35.678	57603	257396	2043
1964	3	219	35.678	57732	255743	2052.1
1964	4	220	36.262	57784	259700	2064.2
1964	5	221	36.468	57975	262674	2077.4
1964	6	222	36.571	58121	261992	2086.8
1964	7	223	36.812	58311	264513	2096.8
1964	8	224	37.052	58510	263902	2113.3
1964	9	225	37.189	58798	267737	2122.6
1964	10	226	36.674	58691	263253	2125.5
1964	11	227	37.807	59114	265805	2139.2
1964	12	228	38.254	59335	274134	2159.3
1965	1	229	38.666	59398	274522	2160.3
1965	2	230	38.906	59683	273760	2170.9
1965	3	231	39.421	59864	279945	2180.9
1965	4	232	39.593	60124	280876	2190.8
1965	5	233	39.902	60363	279032	2204.9
1965	6	234	40.211	60595	278768	2211.7
1965	7	235	40.589	60860	283154	2225.9
1965	8	236	40.761	61085	283437	2237.7
1965	9	237	40.864	61367	279733	2255.9
1965	10	238	41.276	61578	287210	2280
1965	11	239	41.447	61882	291338	2297
1965	12	240	41.963	62230	293238	2308.8
1966	1	241	42.375	62386	296481	2312.8
1966	2	242	42.649	62720	296138	2322.6
1966	3	243	43.233	63087	301542	2333.2
1966	4	244	43.302	63317	299421	2333.9
1966	5	245	43.714	63560	296521	2341.8
1966	6	246	43.92	63978	300802	2356.6
1966	7	247	44.16	64185	297076	2368.3

1966	8	248	44.195	64344	298976	2375.5
1966	9	249	44.607	64433	300599	2381.4
1966	10	250	44.916	64655	302266	2392.9
1966	11	251	44.607	64854	300215	2401.7
1966	12	252	44.71	65076	302811	2397.8
1967	1	253	44.921	65215	303255	2419
1967	2	254	44.411	65208	302091	2417.5
1967	3	255	44.161	65338	304279	2426.6
1967	4	256	44.577	65323	304080	2427.1
1967	5	257	44.188	65478	303831	2430.8
1967	6	258	44.183	65654	306088	2440.3
1967	7	259	44.082	65831	304110	2452.1
1967	8	260	44.927	65964	308195	2462.1
1967	9	261	44.854	66089	309283	2464.4
1967	10	262	45.219	66111	307137	2461
1967	11	263	45.866	66591	315410	2475.3
1967	12	264	46.36	66776	322423	2499.7
1968	1	265	46.31	66606	319189	2502.4
1968	2	266	46.476	67029	318183	2522.5
1968	3	267	46.621	67132	320551	2535.2
1968	4	268	46.688	67417	319915	2544.9
1968	5	269	47.212	67495	322157	2560.1
1968	6	270	47.386	67783	324435	2572
1968	7	271	47.313	68003	327531	2588.6
1968	8	272	47.445	68219	321947	2597.5
1968	9	273	47.625	68365	326453	2609.3
1968	10	274	47.719	68603	330874	2613.3
1968	11	275	48.336	68855	333727	2624.1
1968	12	276	48.489	69161	330632	2633.4
1969	1	277	48.782	69272	330640	2634.2
1969	2	278	49.095	69542	331155	2643.9
1969	3	279	49.48	69791	332373	2656.2
1969	4	280	49.297	69948	333810	2665.3
1969	5	281	49.111	70180	333580	2674.8
1969	6	282	49.591	70498	333389	2683.9
1969	7	283	49.853	70668	333483	2698
1969	8	284	49.967	70799	337101	2715.7
1969	9	285	49.956	70833	338728	2720.7
1969	10	286	49.971	70993	342646	2726.6
1969	11	287	49.5	70941	337902	2726.8
1969	12	288	49.367	71127	337279	2729.9
1970	1	289	48.453	71018	333028	2725.6
1970	2	290	48.421	71165	333324	2727.1

1970	3	291	48.358	71347	329429	2733.9
1970	4	292	48.234	71251	327764	2739.1
1970	5	293	48.177	70993	331324	2741
1970	6	294	48.022	70905	332651	2735.5
1970	7	295	48.139	70969	333006	2749.5
1970	8	296	48.054	70789	332852	2756.1
1970	9	297	47.722	70857	332274	2755.3
1970	10	298	46.768	70416	328817	2732.4
1970	11	299	46.484	70296	323298	2729
1970	12	300	47.552	70666	333558	2733.7
1971	1	301	47.918	70718	336826	2762.4
1971	2	302	47.826	70657	338707	2762.2
1971	3	303	47.775	70746	340112	2771.8
1971	4	304	48.043	70936	341962	2779.5
1971	5	305	48.287	71129	343632	2789.8
1971	6	306	48.489	71163	348351	2788.2
1971	7	307	48.348	71219	344339	2789.9
1971	8	308	48.068	71220	346503	2805.4
1971	9	309	48.849	71527	349623	2808.1
1971	10	310	49.215	71532	349865	2817.5
1971	11	311	49.424	71734	355780	2832.2
1971	12	312	49.994	71996	359102	2855.4
1972	1	313	51.195	72303	362898	2873.2
1972	2	314	51.694	72525	358981	2887.7
1972	3	315	52.099	72808	365632	2903.1
1972	4	316	52.592	73061	368116	2924.4
1972	5	317	52.628	73341	370383	2936.4
1972	6	318	52.755	73643	371999	2910.4
1972	7	319	52.78	73636	369689	2957.5
1972	8	320	53.398	73929	378551	2988.4
1972	9	321	53.774	74115	385061	3001.9
1972	10	322	54.439	74527	390376	3044.5
1972	11	323	55.064	74881	397844	3068.5
1972	12	324	55.81	75235	403150	3088.9
1973	1	325	56.244	75474	408285	3083.2
1973	2	326	57.005	75908	408923	3100.6
1973	3	327	57.062	76137	407290	3103.1
1973	4	328	56.883	76312	405605	3106
1973	5	329	57.28	76516	404305	3127.3
1973	6	330	57.331	76738	403498	3139.2
1973	7	331	57.57	76758	408997	3153.2
1973	8	332	57.379	77018	400545	3142
1973	9	333	57.838	77164	403310	3163.8

1973	10	334	58.209	77502	413655	3194.2
1973	11	335	58.411	77833	420346	3204.9
1973	12	336	58.29	77992	414720	3198.2
1974	1	337	57.978	77953	415094	3164.7
1974	2	338	57.735	78177	413057	3143.3
1974	3	339	57.802	78177	414454	3120.9
1974	4	340	57.787	78261	411433	3102.4
1974	5	341	58.093	78407	413244	3110.8
1974	6	342	58.022	78434	411802	3114.7
1974	7	343	57.996	78517	410860	3125.5
1974	8	344	57.356	78478	406875	3109.8
1974	9	345	57.397	78498	403428	3103.6
1974	10	346	57.135	78569	396520	3108.1
1974	11	347	55.277	78238	392277	3080.1
1974	12	348	53.293	77565	380778	3063.1
1975	1	349	52.693	77145	379822	3045.8
1975	2	350	51.528	76742	377367	3027.1
1975	3	351	50.977	76419	366032	3024.9
1975	4	352	50.924	76298	369699	3022.3
1975	5	353	50.779	76459	369614	3038.4
1975	6	354	51.147	76388	372937	3044.6
1975	7	355	51.497	76626	374789	3047.6
1975	8	356	52.083	76980	379186	3075.7
1975	9	357	52.72	77188	380094	3088
1975	10	358	52.828	77499	380558	3103.3
1975	11	359	52.952	77619	380000	3114.3
1975	12	360	53.641	77915	384025	3117.4
1976	1	361	54.408	78326	393533	3143.8
1976	2	362	55.036	78606	395261	3168.1
1976	3	363	55.049	78819	398249	3185.2
1976	4	364	55.45	79134	400154	3205.5
1976	5	365	55.637	79192	399712	3218.3
1976	6	366	55.615	79258	404625	3218.8
1976	7	367	55.922	79485	404907	3234.2
1976	8	368	56.324	79581	406306	3246.7
1976	9	369	56.382	79842	407482	3252.9
1976	10	370	56.451	79842	402674	3255
1976	11	371	57.276	80141	409369	3284.6
1976	12	372	57.92	80338	419974	3295.7
1977	1	373	57.659	80517	417235	3294.9
1977	2	374	58.376	80794	422908	3307.1
1977	3	375	59.16	81221	428024	3322.2
1977	4	376	59.691	81610	427506	3328.6



1977	5	377	60.09	81977	427776	3347
1977	6	378	60.463	82381	431635	3355.8
1977	7	379	60.707	82760	432810	3372.1
1977	8	380	60.747	82974	433525	3382.2
1977	9	381	61.02	83431	435117	3408.5
1977	10	382	61.165	83661	438376	3441.6
1977	11	383	61.225	84031	440379	3462.9
1977	12	384	61.326	84271	446215	3479.6
1978	1	385	60.651	84464	432554	3470.4
1978	2	386	60.782	84808	442474	3491
1978	3	387	61.92	85338	446917	3518.7
1978	4	388	63.13	86083	460457	3551
1978	5	389	63.39	86404	460019	3555.3
1978	6	390	63.798	86811	462569	3576.3
1978	7	391	63.825	87037	458758	3588.7
1978	8	392	64.033	87324	464741	3606.5
1978	9	393	64.172	87434	463680	3621.6
1978	10	394	64.642	87797	467817	3640.2
1978	11	395	65.111	88249	469844	3652.5
1978	12	396	65.501	88559	472359	3675.5
1979	1	397	65.181	88728	467192	3680.1
1979	2	398	65.475	88985	464984	3694.9
1979	3	399	65.664	89426	478440	3711.6
1979	4	400	65.082	89363	465532	3681.8
1979	5	401	65.56	89681	475838	3686.3
1979	6	402	65.512	89955	470980	3697
1979	7	403	65.318	90019	470384	3699.2
1979	8	404	64.831	90159	471201	3705.8
1979	9	405	64.9	90149	468541	3703.9
1979	10	406	65.213	90360	467141	3724
1979	11	407	65.181	90466	467318	3739.1
1979	12	408	65.231	90617	465953	3752.4
1980	1	409	65.631	90729	469898	3751.6
1980	2	410	65.62	90876	465478	3737.8
1980	3	411	65.416	90995	454879	3719.6
1980	4	412	64.093	90780	445141	3688.2
1980	5	413	62.526	90316	439442	3664.5
1980	6	414	61.683	89974	438177	3665.9
1980	7	415	61.075	89676	443706	3648.8
1980	8	416	61.406	89964	446904	3657.1
1980	9	417	62.43	90046	456317	3668.1
1980	10	418	63.115	90334	465847	3720.9
1980	11	419	64.251	90550	466157	3749.3

1980	12	420	64.606	90774	467308	3772.2
1981	1	421	64.226	91003	470153	3774.3
1981	2	422	63.963	91095	468215	3761
1981	3	423	64.292	91206	463378	3766.4
1981	4	424	63.961	91219	463637	3751.1
1981	5	425	64.437	91142	460358	3759.2
1981	6	426	64.738	91285	459143	3781.5
1981	7	427	65.217	91410	460199	3825
1981	8	428	65.141	91320	458356	3844.2
1981	9	429	64.711	91191	455203	3840
1981	10	430	64.231	91216	449017	3830.3
1981	11	431	63.505	91014	445546	3826.9
1981	12	432	62.772	90831	439778	3817.3
1982	1	433	61.695	90448	437464	3801.4
1982	2	434	62.877	90474	444447	3810.3
1982	3	435	62.409	90337	444802	3811.9
1982	4	436	61.88	90031	445304	3830.9
1982	5	437	61.405	89965	447596	3835.5
1982	6	438	61.166	89703	441250	3812.8
1982	7	439	60.995	89380	439549	3797
1982	8	440	60.477	89177	435519	3795.8
1982	9	441	60.248	88995	436360	3786.1
1982	10	442	59.645	88787	431869	3781
1982	11	443	59.453	88649	433045	3781.9
1982	12	444	58.931	88675	431855	3794.6
1983	1	445	60.053	88826	440096	3792.9
1983	2	446	59.751	88758	438242	3792.5
1983	3	447	60.193	88946	445592	3806.6
1983	4	448	61.005	89211	445551	3809.5
1983	5	449	61.435	89497	452475	3833.7
1983	6	450	61.798	89886	464100	3845.3
1983	7	451	62.752	90313	463853	3879.1
1983	8	452	63.439	89973	463095	3872.3
1983	9	453	64.369	91088	470182	3912.6
1983	10	454	64.842	91408	475334	3953.6
1983	11	455	65.079	91727	480212	3974.8
1983	12	456	65.398	92110	489106	4013.9
1984	1	457	66.802	92524	492267	4040.9
1984	2	458	66.955	93043	492002	4079.7
1984	3	459	67.443	93312	492423	4109.1
1984	4	460	67.841	93650	495151	4143.5
1984	5	461	68.188	93952	499063	4157.2
1984	6	462	68.424	94325	503502	4195.3

1984	7	463	68.642	94647	500813	4224.2
1984	8	464	68.682	94885	500687	4256.2
1984	9	465	68.488	95186	500070	4295.7
1984	10	466	68.445	95499	502168	4262.9
1984	11	467	68.665	95829	506626	4292.2
1984	12	468	68.679	95997	507232	4318
1985	1	469	68.496	96249	505965	4320.4
1985	2	470	68.839	96397	507688	4322.9
1985	3	471	68.84	96734	512132	4337.5
1985	4	472	68.816	96896	511607	4335
1985	5	473	68.853	97163	517534	4338.1
1985	6	474	68.815	97280	508974	4351.4
1985	7	475	68.427	97465	509951	4348
1985	8	476	68.691	97696	519219	4361
1985	9	477	68.985	97878	520612	4364.8
1985	10	478	68.718	98098	515812	4397.7
1985	11	479	68.936	98286	519587	4391
1985	12	480	69.596	98500	516811	4427.5
1986	1	481	69.95	98599	524579	4410.8
1986	2	482	69.529	98718	521595	4435.6
1986	3	483	69.124	98796	522104	4478.2
1986	4	484	69.098	98974	532617	4481.2
1986	5	485	69.162	99096	527509	4482.4
1986	6	486	68.973	98973	530893	4483.5
1986	7	487	69.152	99276	534030	4492.8
1986	8	488	69.197	99435	534789	4508.1
1986	9	489	69.357	99747	547476	4512.8
1986	10	490	69.662	99980	539744	4509.1
1986	11	491	69.976	100145	538090	4515.7
1986	12	492	70.557	100394	549355	4538.3
1987	1	493	70.167	100543	532012	4540.2
1987	2	494	71.099	100772	551202	4557.5
1987	3	495	71.246	101005	551731	4575.4
1987	4	496	71.652	101367	550147	4567.8
1987	5	497	72.06	101564	549229	4593.6
1987	6	498	72.464	101713	551970	4600.5
1987	7	499	72.981	102047	556757	4621.6
1987	8	500	73.494	102266	554302	4651.3
1987	9	501	73.674	102430	560411	4657.1
1987	10	502	74.657	102980	559765	4689.9
1987	11	503	74.945	103200	558214	4711.1
1987	12	504	75.256	103544	562944	4762.9
1988	1	505	75.318	103623	561659	4735.4

1988	2	506	75.634	104046	568007	4759.1
1988	3	507	75.778	104311	577105	4767.5
1988	4	508	76.079	104537	574010	4778.3
1988	5	509	76.029	104811	575812	4784.1
1988	6	510	76.121	105132	581457	4800.1
1988	7	511	76.321	105400	579099	4820.1
1988	8	512	76.756	105599	579434	4825.9
1988	9	513	76.507	105814	581726	4835.2
1988	10	514	76.86	106091	586242	4863.7
1988	11	515	77.058	106368	588505	4870.1
1988	12	516	77.337	106691	596176	4910
1989	1	517	77.578	106993	596857	4944.6
1989	2	518	77.201	107244	590334	4949.4
1989	3	519	77.484	107438	586820	4963.1
1989	4	520	77.474	107637	592172	4955.6
1989	5	521	76.965	107738	589532	4934.4
1989	6	522	76.925	107838	587714	4947.6
1989	7	523	76.154	107933	581686	4954.1
1989	8	524	76.822	108048	596452	4959.1
1989	9	525	76.612	108178	592273	4952.8
1989	10	526	76.509	108290	586555	4962.2
1989	11	527	76.646	108571	591801	4986.8
1989	12	528	77.172	108692	593757	4995.9
1990	1	529	76.72	108946	589119	5004.8
1990	2	530	77.435	109263	597872	5029.6
1990	3	531	77.827	109461	601356	5031.3
1990	4	532	77.815	109499	594426	5055.9
1990	5	533	77.849	109790	599256	5045.7
1990	6	534	78.138	109869	600805	5054.1
1990	7	535	77.985	109707	597586	5075.2
1990	8	536	78.084	109543	603597	5050
1990	9	537	78.19	109457	592499	5044.6
1990	10	538	77.709	109274	589958	4997.6
1990	11	539	76.722	109074	582984	4995.3
1990	12	540	76.235	108965	576916	5001.2
1991	1	541	75.953	108759	573114	4946.3
1991	2	542	75.387	108500	576506	4945.2
1991	3	543	74.977	108330	573173	4950.4
1991	4	544	75.156	108145	584467	4960.8
1991	5	545	75.907	108107	589261	4958.2
1991	6	546	76.57	108200	586622	4986.7
1991	7	547	76.652	108131	594279	4971.1
1991	8	548	76.6	108215	591775	4971.5

1991	9	549	77.28	108223	594306	4981.3
1991	10	550	77.15	108209	594906	4958.9
1991	11	551	76.985	108115	592980	4969.6
1991	12	552	76.723	108121	585431	4993.9
1992	1	553	76.247	108084	596771	4991.6
1992	2	554	76.855	108077	598272	5018.8
1992	3	555	77.473	108119	600680	5019.4
1992	4	556	77.952	108301	604683	5028.1
1992	5	557	78.261	108495	599422	5044.3
1992	6	558	78.196	108541	605741	5048.2
1992	7	559	78.851	108595	613853	5039
1992	8	560	78.572	108741	604088	5035.6
1992	9	561	78.718	108807	612487	5049.6
1992	10	562	79.232	108941	614966	5079.8
1992	11	563	79.634	109119	616014	5100.2
1992	12	564	79.682	109266	625603	5088.5
1993	1	565	79.994	109502	627170	5112.1
1993	2	566	80.244	109816	626366	5111.6
1993	3	567	80.373	109749	622406	5088.4
1993	4	568	80.572	110055	625622	5115.5
1993	5	569	80.262	110398	626613	5135.7
1993	6	570	80.397	110539	632406	5125.7
1993	7	571	80.707	110744	629346	5124.4
1993	8	572	80.607	110957	632571	5145.2
1993	9	573	81.152	111204	638204	5140.4
1993	10	574	81.587	111525	640930	5149.4
1993	11	575	81.955	111780	644218	5164.5
1993	12	576	82.44	112034	646255	5190.8
1994	1	577	82.852	112302	646991	5166.2
1994	2	578	82.913	112532	652909	5224
1994	3	579	83.643	112982	663780	5246.9
1994	4	580	84.123	113350	660284	5260.3
1994	5	581	84.594	113697	661882	5292.9
1994	6	582	85.164	113980	667958	5286.3
1994	7	583	85.311	114333	665030	5288.6
1994	8	584	85.775	114673	680734	5298.7
1994	9	585	85.879	114980	677787	5328.3
1994	10	586	86.559	115235	682960	5374.1
1994	11	587	87.091	115641	688977	5373.7
1994	12	588	88.043	115918	694151	5394.9
1995	1	589	88.451	116235	697218	5410.4
1995	2	590	88.542	116523	693295	5408.6
1995	3	591	88.548	116679	693050	5410.1

1995	4	592	88.426	116864	687864	5418.8
1995	5	593	88.654	116830	692929	5412.8
1995	6	594	88.985	117024	699608	5433.4
1995	7	595	88.646	117138	691337	5440.7
1995	8	596	89.847	117444	705342	5446.4
1995	9	597	90.222	117664	704480	5467.2
1995	10	598	90.004	117789	704848	5478.4
1995	11	599	90.391	117946	710618	5504.1
1995	12	600	90.776	118118	713986	5516.5
1996	1	601	90.093	118031	706859	5500.5
1996	2	602	91.319	118501	713246	5546.5
1996	3	603	91.099	118767	713601	5563.1
1996	4	604	91.922	118925	719986	5568.5
1996	5	605	92.527	119269	725464	5594.3
1996	6	606	93.356	119546	722044	5633.6
1996	7	607	93.328	119754	727746	5633.5
1996	8	608	93.91	120041	730244	5659.8
1996	9	609	94.46	120172	732477	5682.2
1996	10	610	94.579	120439	738211	5673.7
1996	11	611	95.469	120711	743672	5691
1996	12	612	96.064	120916	738316	5715.8
1997	1	613	96.34	121095	715601	5723.1
1997	2	614	97.687	121429	725226	5747.8
1997	3	615	98.071	121744	724004	5773.5
1997	4	616	98.516	122003	729129	5786.4
1997	5	617	98.883	122253	726443	5813.8
1997	6	618	99.352	122537	733928	5836.3
1997	7	619	99.761	122843	745467	5856.5
1997	8	620	100.78	122900	739273	5893.5
1997	9	621	101.667	123358	746450	5912.8
1997	10	622	102.485	123671	746289	5945.4
1997	11	623	103.094	123954	749785	5987.6
1997	12	624	103.365	124270	753905	6015.7
1998	1	625	103.83	124529	757031	6070
1998	2	626	104.098	124761	764366	6117.3
1998	3	627	104.416	124903	769521	6160.9
1998	4	628	105.032	125211	769382	6186.7
1998	5	629	105.536	125566	768609	6224.1
1998	6	630	105.029	125756	769376	6257.2
1998	7	631	104.903	125837	767056	6277.6
1998	8	632	106.748	126229	771925	6309.2
1998	9	633	106.555	126492	779009	6327.2
1998	10	634	107.278	126689	786093	6339.2

1998	11	635	106.977	126947	789056	6368.3
1998	12	636	107.064	127297	798879	6374.8
1999	1	637	107.811	127436	797766	6390.1
1999	2	638	108.181	127870	809803	6409.7
1999	3	639	108.648	128006	811479	6420.3
1999	4	640	108.876	128322	809481	6404.5
1999	5	641	109.447	128488	816569	6426.3
1999	6	642	109.578	128721	818383	6450.7
1999	7	643	110.316	129009	822580	6456.2
1999	8	644	110.817	129213	827167	6479.9
1999	9	645	110.737	129448	824485	6466.2
1999	10	646	111.688	129801	829081	6516.3
1999	11	647	112.343	130130	838575	6566.4
1999	12	648	113.125	130406	845064	6616.8
2000	1	649	113.2	130728	851,782	6699.7
2000	2	650	113.947	130859	839,581	6726.6
2000	3	651	114.446	131397	849,163	6758.4
2000	4	652	115.299	131645	849,492	6775.9
2000	5	653	115.982	131887	846,917	6796.8
2000	6	654	116.202	131925	852,440	6830
2000	7	655	115.926	131827	849,290	6865.9
2000	8	656	115.667	131777	849,532	6891
2000	9	657	116.071	132023	852,418	6893.7
2000	10	658	115.631	132018	849,329	6906.9
2000	11	659	115.506	132217	845,684	6913.8
2000	12	660	115.144	132319	852,111	6913.7
2001	1	661	114.196	132382	846,154	6895.1
2001	2	662	113.622	132457	849,124	6887.3
2001	3	663	113.075	132461	846,301	6895
2001	4	664	112.55	132243	836,301	6876.4
2001	5	665	111.847	132229	842,232	6846.6
2001	6	666	111.145	132108	833,085	6845.4
2001	7	667	110.996	132045	841,549	6855.8
2001	8	668	110.696	131966	845,389	6851.5
2001	9	669	109.933	131819	821,184	6883.1
2001	10	670	109.512	131414	849,751	6809.4
2001	11	671	108.845	131087	845,791	6811.8
2001	12	672	108.327	130890	849,366	6852
2002	1	673	108.967	130871	857,225	6844.3
2002	2	674	109.197	130706	848,938	6857.5
2002	3	675	109.641	130701	848,731	6866
2002	4	676	110.113	130680	857,047	6846.9
2002	5	677	110.447	130702	856165	6877.2

2002	6	678	110.818	130736	859290	6922.4
2002	7	679	111.577	130790	868400	6904.1
2002	8	680	111.305	130913	857375	6909.9
2002	9	681	111.305	130829	859025	6916
2002	10	682	110.655	130898	858881	6925.5
2002	11	683	110.796	130810		
2002	12	684		130709		



arm Employment - Seasonally Adjusted  
globalindicators.org, table BCI-01B column A0M047  
nil. Chain 1996\$) from globalindicators.org/US/Data/bci.01b.cfm  
ww.globalindicators.org, BCI-01B, column A0M051

<http://www.bea.doc.gov/bea/newsrel/gdpnewsrelease.htm>

---

Gross domestic product (GDP).													
	4.3	4.1	3.8	.3	6.7	3.0	2.0	5.2	7.1	2.6	4.8	.6	1.1
-----					1998	1999	2000	2001					
Gross	domestic	product	(GDP).		4.3	4.1	3.8	0.3					

-----

-6 -1.6 -3 2.7 5.0 1.1

IV 98	I 99	II 99	III 99	IV 99	I 00	II 00	III 00
6.7	3	2	5.2	7.1	2.6	4.8	0.6
					1.026	1.0752	1.0817

IV 00	I 01	II 01	III 01	IV 01	I 02	II 02	III 02
1.1	-0.6	-1.6	-0.3	2.7	5	1.3	4
1.0936	1.0870	1.0696	1.0664	1.0952	1.1500	1.1649	1.2115

46-01  
46-02  
46-03  
46-04  
46-05  
46-06  
46-07  
46-08  
46-09  
46-10  
46-11  
46-12  
47-01  
47-02  
47-03  
47-04  
47-05  
47-06  
47-07  
47-08  
47-09  
47-10  
47-11  
47-12  
48-01  
48-02  
48-03  
48-04  
48-05  
48-06  
48-07  
48-08  
48-09  
48-10  
48-11  
48-12  
49-01  
49-02  
49-03  
49-04  
49-05  
49-06  
49-07

49-08  
49-09  
49-10  
49-11  
49-12  
50-01  
50-02  
50-03  
50-04  
50-05  
50-06  
50-07  
50-08  
50-09  
50-10  
50-11  
50-12  
51-01  
51-02  
51-03  
51-04  
51-05  
51-06  
51-07  
51-08  
51-09  
51-10  
51-11  
51-12  
52-01  
52-02  
52-03  
52-04  
52-05  
52-06  
52-07  
52-08  
52-09  
52-10  
52-11  
52-12  
53-01  
53-02

53-03  
53-04  
53-05  
53-06  
53-07  
53-08  
53-09  
53-10  
53-11  
53-12  
54-01  
54-02  
54-03  
54-04  
54-05  
54-06  
54-07  
54-08  
54-09  
54-10  
54-11  
54-12  
55-01  
55-02  
55-03  
55-04  
55-05  
55-06  
55-07  
55-08  
55-09  
55-10  
55-11  
55-12  
56-01  
56-02  
56-03  
56-04  
56-05  
56-06  
56-07  
56-08  
56-09

56-10  
56-11  
56-12  
57-01  
57-02  
57-03  
57-04  
57-05  
57-06  
57-07  
57-08  
57-09  
57-10  
57-11  
57-12  
58-01  
58-02  
58-03  
58-04  
58-05  
58-06  
58-07  
58-08  
58-09  
58-10  
58-11  
58-12  
59-01  
59-02  
59-03  
59-04  
59-05  
59-06  
59-07  
59-08  
59-09  
59-10  
59-11  
59-12  
60-01  
60-02  
60-03  
60-04



60-05  
60-06  
60-07  
60-08  
60-09  
60-10  
60-11  
60-12  
61-01  
61-02  
61-03  
61-04  
61-05  
61-06  
61-07  
61-08  
61-09  
61-10  
61-11  
61-12  
62-01  
62-02  
62-03  
62-04  
62-05  
62-06  
62-07  
62-08  
62-09  
62-10  
62-11  
62-12  
63-01  
63-02  
63-03  
63-04  
63-05  
63-06  
63-07  
63-08  
63-09  
63-10  
63-11

63-12  
64-01  
64-02  
64-03  
64-04  
64-05  
64-06  
64-07  
64-08  
64-09  
64-10  
64-11  
64-12  
65-01  
65-02  
65-03  
65-04  
65-05  
65-06  
65-07  
65-08  
65-09  
65-10  
65-11  
65-12  
66-01  
66-02  
66-03  
66-04  
66-05  
66-06  
66-07  
66-08  
66-09  
66-10  
66-11  
66-12  
67-01  
67-02  
67-03  
67-04  
67-05  
67-06

67-07  
67-08  
67-09  
67-10  
67-11  
67-12  
68-01  
68-02  
68-03  
68-04  
68-05  
68-06  
68-07  
68-08  
68-09  
68-10  
68-11  
68-12  
69-01  
69-02  
69-03  
69-04  
69-05  
69-06  
69-07  
69-08  
69-09  
69-10  
69-11  
69-12  
70-01  
70-02  
70-03  
70-04  
70-05  
70-06  
70-07  
70-08  
70-09  
70-10  
70-11  
70-12  
71-01

71-02  
71-03  
71-04  
71-05  
71-06  
71-07  
71-08  
71-09  
71-10  
71-11  
71-12  
72-01  
72-02  
72-03  
72-04  
72-05  
72-06  
72-07  
72-08  
72-09  
72-10  
72-11  
72-12  
73-01  
73-02  
73-03  
73-04  
73-05  
73-06  
73-07  
73-08  
73-09  
73-10  
73-11  
73-12  
74-01  
74-02  
74-03  
74-04  
74-05  
74-06  
74-07  
74-08

74-09  
74-10  
74-11  
74-12  
75-01  
75-02  
75-03  
75-04  
75-05  
75-06  
75-07  
75-08  
75-09  
75-10  
75-11  
75-12  
76-01  
76-02  
76-03  
76-04  
76-05  
76-06  
76-07  
76-08  
76-09  
76-10  
76-11  
76-12  
77-01  
77-02  
77-03  
77-04  
77-05  
77-06  
77-07  
77-08  
77-09  
77-10  
77-11  
77-12  
78-01  
78-02  
78-03

78-04  
78-05  
78-06  
78-07  
78-08  
78-09  
78-10  
78-11  
78-12  
79-01  
79-02  
79-03  
79-04  
79-05  
79-06  
79-07  
79-08  
79-09  
79-10  
79-11  
79-12  
80-01  
80-02  
80-03  
80-04  
80-05  
80-06  
80-07  
80-08  
80-09  
80-10  
80-11  
80-12  
81-01  
81-02  
81-03  
81-04  
81-05  
81-06  
81-07  
81-08  
81-09  
81-10

81-11  
81-12  
82-01  
82-02  
82-03  
82-04  
82-05  
82-06  
82-07  
82-08  
82-09  
82-10  
82-11  
82-12  
83-01  
83-02  
83-03  
83-04  
83-05  
83-06  
83-07  
83-08  
83-09  
83-10  
83-11  
83-12  
84-01  
84-02  
84-03  
84-04  
84-05  
84-06  
84-07  
84-08  
84-09  
84-10  
84-11  
84-12  
85-01  
85-02  
85-03  
85-04  
85-05

85-06  
85-07  
85-08  
85-09  
85-10  
85-11  
85-12  
86-01  
86-02  
86-03  
86-04  
86-05  
86-06  
86-07  
86-08  
86-09  
86-10  
86-11  
86-12  
87-01  
87-02  
87-03  
87-04  
87-05  
87-06  
87-07  
87-08  
87-09  
87-10  
87-11  
87-12  
88-01  
88-02  
88-03  
88-04  
88-05  
88-06  
88-07  
88-08  
88-09  
88-10  
88-11  
88-12



89-01  
89-02  
89-03  
89-04  
89-05  
89-06  
89-07  
89-08  
89-09  
89-10  
89-11  
89-12  
90-01  
90-02  
90-03  
90-04  
90-05  
90-06  
90-07  
90-08  
90-09  
90-10  
90-11  
90-12  
91-01  
91-02  
91-03  
91-04  
91-05  
91-06  
91-07  
91-08  
91-09  
91-10  
91-11  
91-12  
92-01  
92-02  
92-03  
92-04  
92-05  
92-06  
92-07

92-08  
92-09  
92-10  
92-11  
92-12  
93-01  
93-02  
93-03  
93-04  
93-05  
93-06  
93-07  
93-08  
93-09  
93-10  
93-11  
93-12  
94-01  
94-02  
94-03  
94-04  
94-05  
94-06  
94-07  
94-08  
94-09  
94-10  
94-11  
94-12  
95-01  
95-02  
95-03  
95-04  
95-05  
95-06  
95-07  
95-08  
95-09  
95-10  
95-11  
95-12  
96-01  
96-02

96-03  
96-04  
96-05  
96-06  
96-07  
96-08  
96-09  
96-10  
96-11  
96-12  
97-01  
97-02  
97-03  
97-04  
97-05  
97-06  
97-07  
97-08  
97-09  
97-10  
97-11  
97-12  
98-01  
98-02  
98-03  
98-04  
98-05  
98-06  
98-07  
98-08  
98-09  
98-10  
98-11  
98-12  
99-01  
99-02  
99-03  
99-04  
99-05  
99-06  
99-07  
99-08  
99-09

99-10  
99-11  
99-12  
00-01  
00-02  
00-03  
00-04  
00-05  
00-06  
00-07  
00-08  
00-09  
00-10  
00-11  
00-12  
01-01  
01-02  
01-03  
01-04  
01-05  
01-06  
01-07  
01-08  
01-09  
01-10  
01-11  
01-12  
02-01  
02-02  
02-03  
02-04  
02-05  
02-06  
02-07  
02-08  
02-09  
02-10  
02-11  
02-12